

BIOCHROM EZ READ 400 MICROPLATE READER

QUICK START GUIDE

1. To turn on the instrument:

Connect instrument to a power source using the power supply. Turn on the instrument using the switch at the back of the instrument.

Please note: Check user's manual for important safety information.

2. To connect the instrument to a PC:

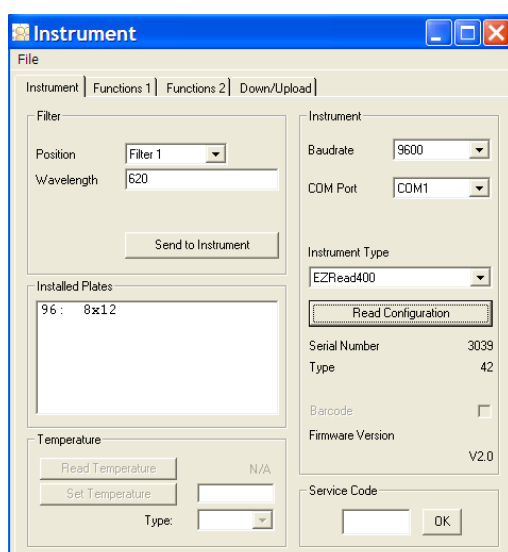
Ensure that you first have administrator rights for installing the software and connecting the instrument to the PC for the first time. Connect to the PC to the instrument using the USB port on the PC to the USB port on the back of the instrument using the supplied USB A to B cable. Determine the communication port (COM) used by the instrument. In the **Start** menu of the PC, go to **Control Panel\System\Hardware\Device Manager\Ports** to determine the COM port used by the instrument. If you are unsure which COM port is being used, please disconnect and connect the USB cable and observe which COM port reappears after re-connecting to the PC.

Please Note: The instrument cannot connect to the PC if a COM port higher than 9 is used. If this is the case please use the supplied COM port reassignment utility to reassign the COM port to any unused port from 1-9.

3. To connect instrument to ADAP 2.0 software:

Insert the CD supplied with the instrument into a PC, install ADAP. Open ADAP. ADAP will prompt for a user ID and password. Login using the pre-set ID and password: **admin/admin**. Once logged as **admin**, specific user IDs, passwords and administrative rights may be set.

4. Select **Setup/Instrument** in the task bar. A dialogue box will open:



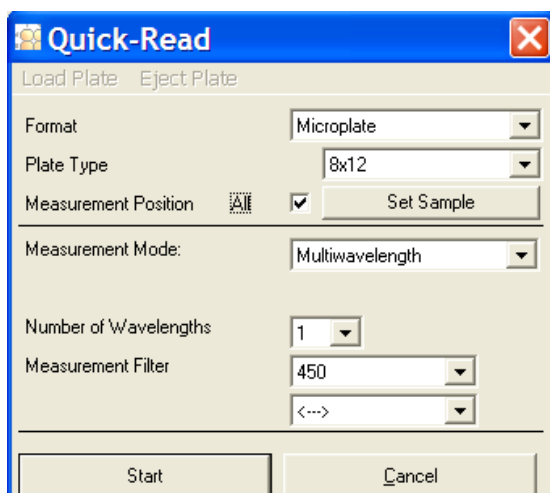
Under the **Instrument** tab:

In Baudrate, select 9600

In **COM** Port, select port as determined in step 2

In Instrument Type, select EZRead400

- To confirm that the instrument is connected with the computer, select the **Read Configuration** button. The serial number of the instrument should now appear in the **Setup/Instrument** dialogue box along with compatible plate types. Select **File\Save** to save settings.
- To measure a plate:** Go to **Reading/Quick** or the **R** button in the menu bar. In the **Quick-Read** dialogue box: Confirm that the correct format and plate type are selected.



Select **All** in **Measurement Position** to read the entire plate.

Select **Endpoint Photometric** for basic readings using a measurement and reference filter.

Select the measurement filter and the reference filter from the drop-down menu.

Please note: We advise the use a reference filter to control for optical inference that may occur from the plate. 620 nm is typically used as a control wavelength however it is important to confirm that your sample of interest does not absorb at this wavelength.

- Place plate in the plate transporter. Select **Start**. Absorbance measurements will appear in the open matrix in ADAP. When prompted, enter a plate ID. Data can be exported to data analysis software using the **Copy** icon. Data will paste as a matrix with filter wavelength, with time and date.

*For additional information on how to use plate measurements to construct a standard curve, see **Biochrom EZ Read 400: Constructing a Standard Curve**.*