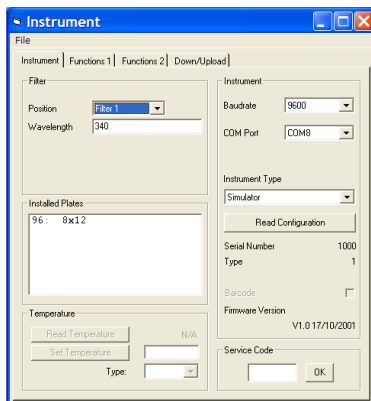


Biochrom ADAP Software

TECH TIP: UPGRADING ADAP SOFTWARE

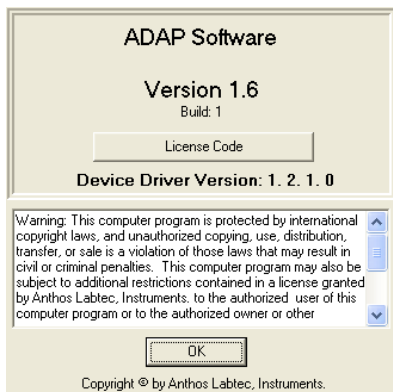
1. Insert the CD supplied with the instrument into PC, install ADAP. Open ADAP.
2. On the first start up of ADAP, you may be asked for your license key. If you have already used ADAP follow the directions listed below.
3. ADAP will prompt for a user ID and password. Login using the pre-set ID and password: **sadmin/sadmin**. Once logged as **sadmin**, specific user IDs, passwords and administrative rights may be set. Install ADAP on to the PC that will be used to control the instrument.
4. Login using the pre-set ID and password: **sadmin/sadmin**. Once logged as **sadmin**, specific user IDs, passwords and administrative rights may be set.
5. Select **Setup/Instrument** in the task bar. A dialogue box will open:



Under the **Instrument** tab:

- In the **Instrument Type** drop-down menu: instrument to be connected to the PC.
- Select the **COM port** currently used by the instrument to connect to the PC.

6. In the menu bar, select **File>Save** and then close the window.
7. In the menu bar, select **Help>About**. In the resulting window, select **License Code** and enter in the supplied code:



8. Select OK. If there is no error message then the license code has been entered correctly.
9. Select Read Configuration in Setup>Instrument. Select **File>Save**.
10. If the following procedure does not work, please exit ADAP and restart the software. The following icon will appear (among others) in the task bar if the software has been unlocked:

