

BIOCHROM ANTHOS ZENYTH 200RT

QUICK MEASUREMENTS OF CUVETTES USING ADAP BASIC



1. To connect the instrument to a PC:

Connect to a PC via serial port to serial port or a serial to USB port adaptor. Determine the communication port (com) used by the instrument. In the Start menu of the PC, go to Control Panel\System\Hardware\Device Manager\Ports.

2. To start ADAP software:

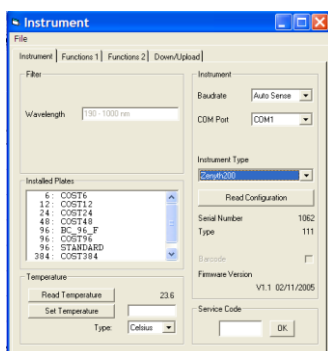
Insert CD supplied with the instrument into PC, install ADAP. Open ADAP. ADAP will prompt for a user ID and password. Use the pre-set ID and password: **admin\sadmin**. Once logged as **sadmin**, set specific user IDs, passwords and administrative rights.

Please Note:

- Ensure that the instrument is connected using COM ports 1 – 9.
- Some USB to RS232 converters do not work well; use a serial port whenever possible.
- Ensure that you are using the original RS232 cable that was shipped with the instrument.

3. To connect instrument to ADAP:

Select **Setup>Instrument** in the menu bar. A dialogue box will open:



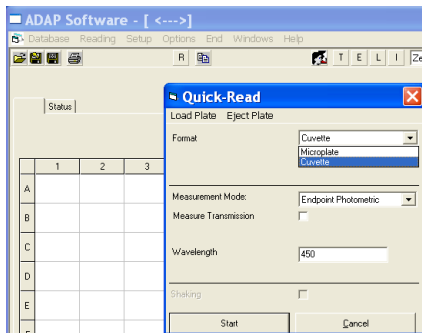
Under the **Instrument** tab:

- In **Baudrate**: select Auto Sense
- In **COM Port**: select port used by the instrument.
- In **Instrument Type**: select Zenyth200

- ### 4. To confirm that the instrument is connected with the computer, select the **Read Configuration** button. The serial number of the instrument should now appear in the **Setup>Instrument** dialogue box along with compatible plate types.

5. **To measure a plate:**

Go to **Reading>Quick** or the **R** button in the task bar.

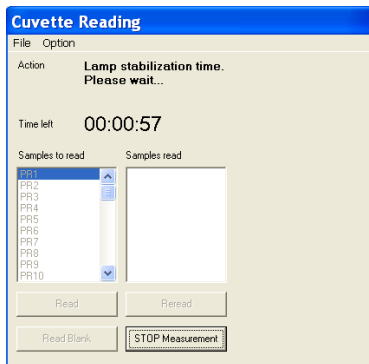


In format, select **Cuvette**

For measurement mode select **Endpoint**

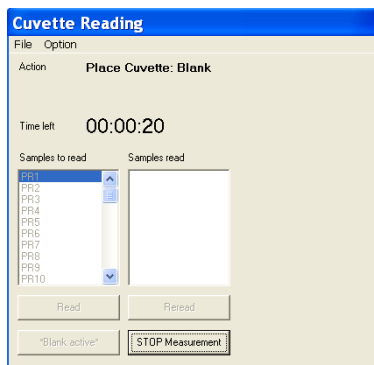
Select wavelength of choice.

6. The **Cuvette Reading** window will open. Select **Read Blank**. Wait for the lamp to stabilize. For the first read, the lamp will take 60 seconds to warm up

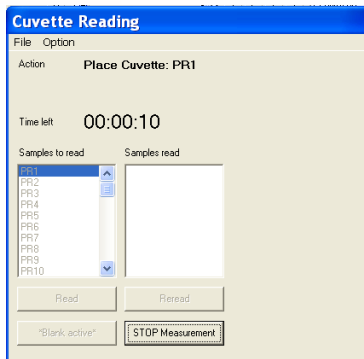


Please Note: For best results the blank should be in the same or identical cuvette and contain the same solvent as the sample.

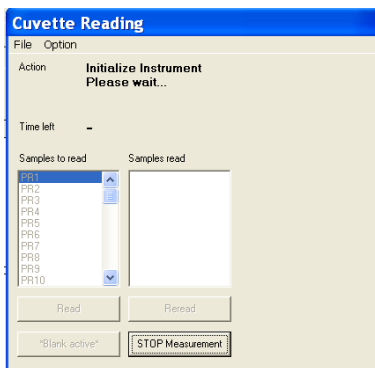
7. Screen will prompt the user to place cuvette in cell holder. The user has 20 seconds to place the cuvette in the cell holder.



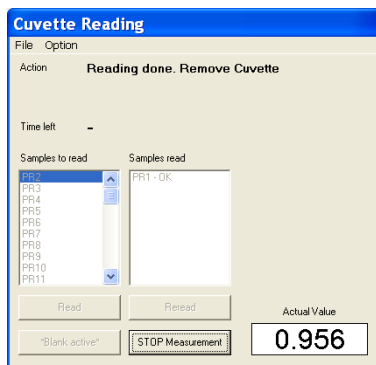
8. Instrument will automatically detect the placement of the cuvette in the cell holder. There is no need to close the lid to the spectrophotometer. Now select **Read** to measure a sample:



9. Wait for the instrument to prompt for the cuvette:



10. Instrument automatically detects the cuvette and makes a measurement:



11. Once all the measurements have been completed, select **Stop Measurement**.
12. Data can be saved or copied using the **Copy** icon. Data will paste as a matrix with filter wavelength, time and date.