

BIOCHROM ZENYTH 200ST MICROPLATE READER

QUICK MEASUREMENTS IN REMOTE MODE



1. To turn on the instrument:

Connect instrument to a power source using the appropriate power cord.

- ✓ Check user's manual for important safety information.

2. To configure the instrument to communicate with a PC:

In main menu, select **Setup>More>More** until **Remote Control** option is available above the F3 button (see figure 1 for keypad and display). Select **Remote Control** and option 2 for 38,400 baudrate.

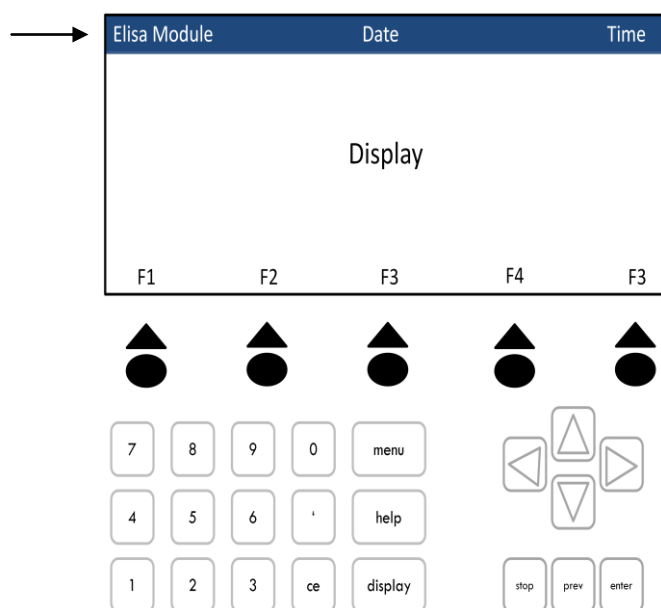


Figure 1: Keypad and display of the Zenyth 200st. Arrow keys are used to select option available at the bottom of the display screen.

Note: The module in use is displayed in the upper left of the screen. (see arrow)

3. To connect the instrument to a PC:

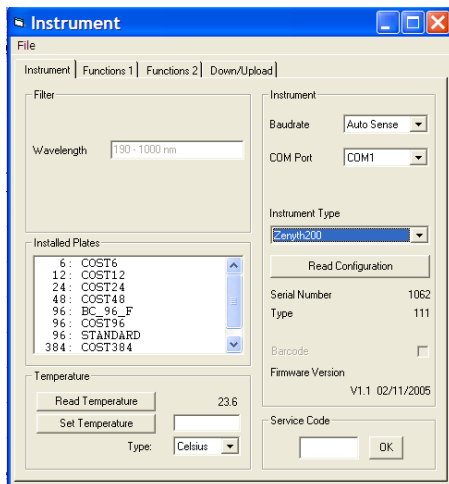
Connect to a PC via serial port to serial port or a serial to USB port adaptor. Determine the communication port (com) used by the instrument. In the Start menu of the PC, go to Control Panel\System\Hardware\Device Manager\Ports.

Please Note:

- Ensure that the instrument is connected using COM ports 1 – 9.
- Some USB to RS232 converters do not work well; use a serial port whenever possible.
- Ensure that you are using the original RS232 cable that was shipped with the instrument.

4. To connect instrument to ADAP software:

Insert CD supplied with the instrument into PC, install ADAP. Open ADAP. ADAP will prompt for a user ID and password. Use the pre-set ID and password: **admin\admin**. Once logged as **admin**, set specific user IDs, passwords and administrative rights. Select **Setup>Instrument** in the menu bar. A dialogue box will open:



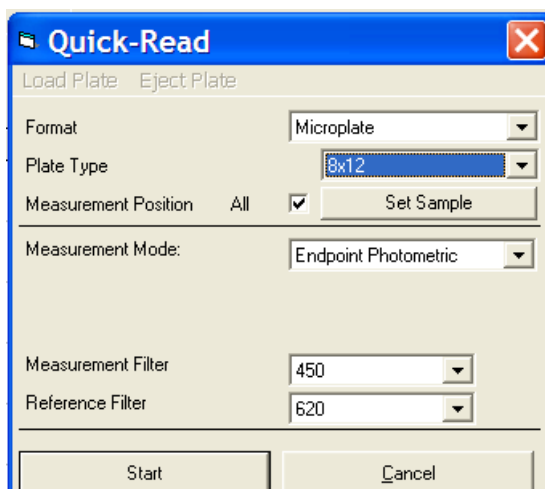
Under the **Instrument** tab:

- ✓ In **Baudrate**: select Auto Sense
- ✓ In **COM Port**: select port
- ✓ In **Instrument Type**: select Zenyth200

3. To confirm that the instrument is connected with the computer, select the **Read Configuration** button. The serial number of the instrument should now appear in the **Setup>Instrument** dialogue box along with compatible plate types.

4. **To measure a plate:**

Go to **Reading>Quick** or the **R** button in the task bar.



In the **Quick-Read** dialogue box:

- ✓ Confirm that the correct format and plate type are selected.
- ✓ Select **All** in **Measurement Position** to read the entire plate.
- ✓ Select **Endpoint Photometric** for basic readings using a measurement and reference filter.
- ✓ Select the measurement filter and the reference filter from the drop-down menu.

Please Note: It is important to use a reference filter to account for optical inference that may result from the plate.

5. Place plate with A1 in the upper left corner of the plate transport. Select **Start**. Absorbance measurements will appear in the open matrix in ADAP. Data can be exported to data analysis software using the **Copy** icon. Data will paste as a matrix with filter wavelength, time and date.