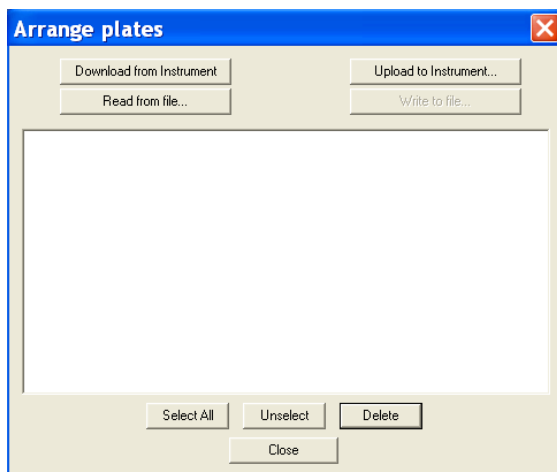


BIOCHROM ASYS EXPERT PLUS MICROPLATE READER

TECH TIPS: TRANSFERRING DATA TO A PC USING CONNECT+

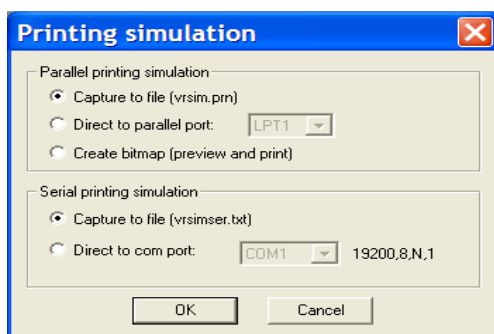


1. Go to main menu in standalone software on Expert Plus.
2. Connect instrument to a PC using the serial port or a USB to serial adaptor.
3. Determine the communication port (com) used by the instrument in the PC. In the Start menu of the PC, go to Control Panel\System\Hardware\Device Manager\Ports.
4. Install **Connect+** from the CD sent with the instrument. Open **Connect+**.
5. Go to **Files>Serial Communication** to establish a connection between the program and the instrument. Set COM port
6. Select **Files>Arange Plates** to download data from the instrument.



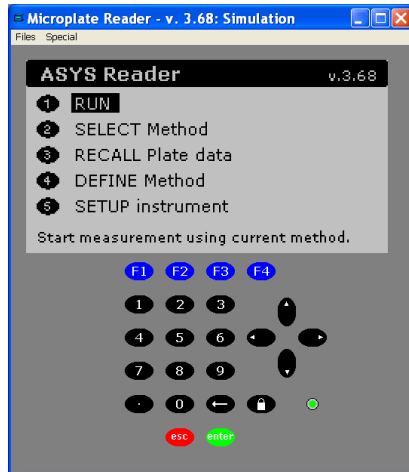
- a. Select **Download from Instrument**.
- b. Select plate or method of interest and select **Write to File**. Save with file name of choice.
- c. Select **Close** to return to the main menu.

7. Go to **Special/Printing options....**



- a. Under **Parallel printing simulation** and **Serial printing simulation** select **Capture to file**.
- b. Select **OK** to return to the **Main Menu**.

9. The **Connect+** interface mimic the keypad on the instrument. Use the keyboard arrow keys or the mouse on your PC to select **RECALL Plate Data** and confirm by double clicking or pressing enter.



- a. Select plate of interest using the arrow buttons and F4, **Select**.
- b. Select F3, **Print OD**.

10. In analysis program of choice, open **ConnectPlusser.txt** in **Connect+** folder in **Program Files**.
11. When prompted use tab to delimitate data. Now select **Next>Finish**. Data will paste as a matrix into the data analysis software of your choice. Save resulting file with a new name and file extension.